

*4K—BUTTER DISH—2.00



4F—PLATE 10"—2.00
4G—PLATE 7"—1.00
4E—5" SAUCER—.75



4S—BONE DISH 6½"—1.00



*4X—CEREAL 16 OZ.—1.00



*5L—12 OZ. TUMBLER—1.00



*5LC—6 OZ. JUICE—.75



4C—CUP—1.00



*4Y—6" SPOON HOLDER—1.00



4H—SALT & PEPPER—1.50



*4V—BAKER 2 QT.—3.50



4A—8 OZ. CREAMER—1.25



4B—SUGAR WITH LID—1.75



4M—MUG 18 OZ.—1.50



4Z—6" SOUP—1.00



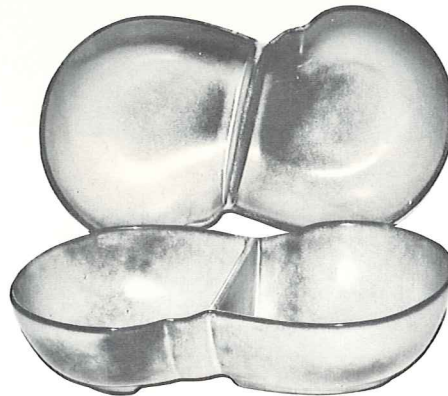
4N—VEGETABLE 24 OZ.—1.50



4P—13" PLATTER—2.50



*4W—BAKER 3 QT.—4.50



4QD—11" DIVIDED BOWL—2.50



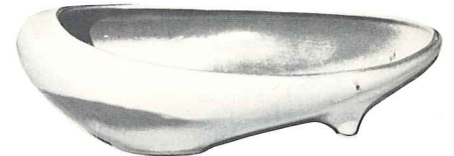
*214—SERVICE BOWL 12"—2.50



*4SC—11 oz. SOUP CUP—1.50



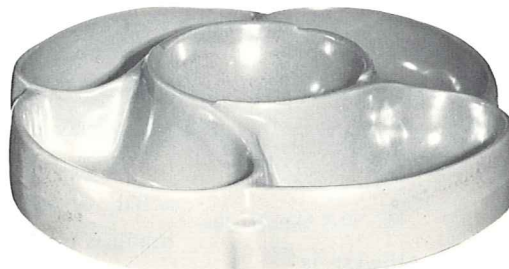
*BP—6 OZ. BEAN POT—.75



*231—SERVICE BOWL 11"—2.50



4XL—24 OZ. SALAD OR GUMBO—1.25



818—5 SECTION LAZY SUZETTE ON BALL BEARING BASE—12"—7.00



4D—PITCHER 2 QUART—3.00

THIS PAGE AVAILABLE IN PRAIRIE GREEN, DESERT GOLD AND BROWN SATIN, EXCEPT WHERE NOTED *

*AVAILABLE IN ALL COLORS—ADD 50% FOR FLAME—SEE BACK COVER

SIZES ARE APPROXIMATE AND MAY VARY SLIGHTLY.